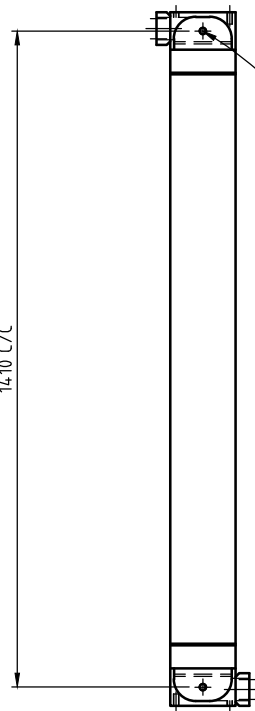


1410 C/C

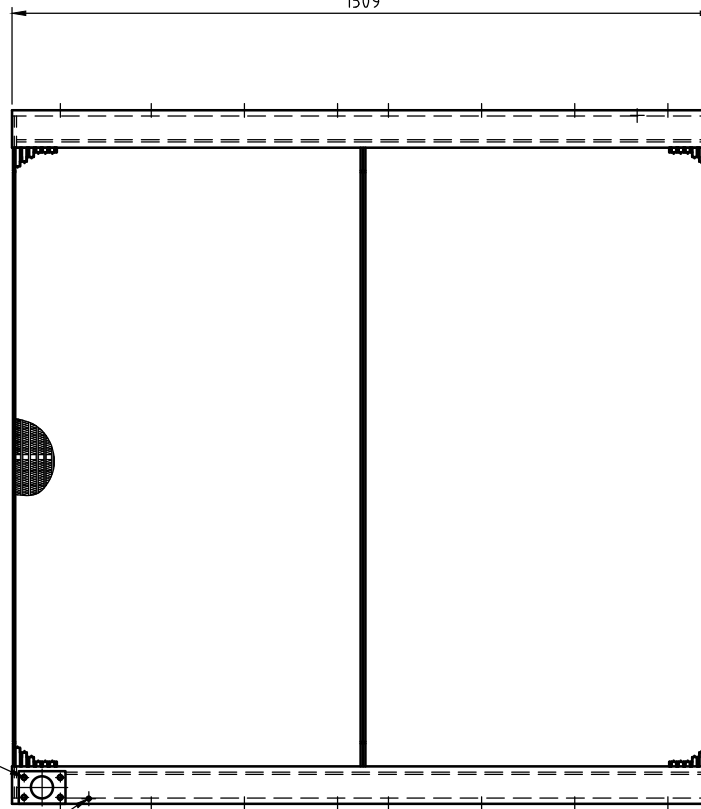


M16 THREAD  
(TYP 4 PLACES)

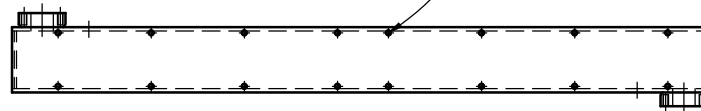
M12 THREAD  
(TYP 8 PLACES)

M10 THREAD  
(TYP 2 PLACES)

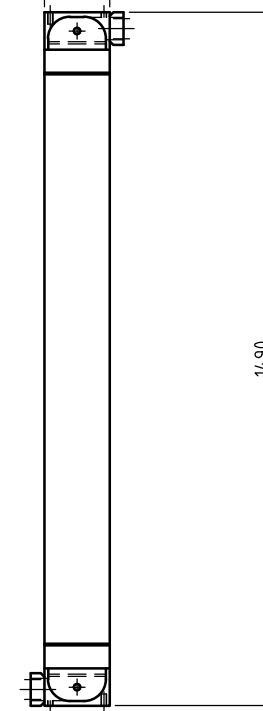
1509



M12 THREAD  
(TYP 32 PLACES)



140



1490


**NOTES!**

1. ALL DIMENSIONS IN mm UNLESS OTHERWISE NOTED.
2. OPERATING / TEST PRESSURE:- 24 BAR / 35 BAR.


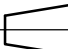
OEM PART No's:- 5337106, 6002603 & 145-3126

5				
4				
3				
2				
1				
No	DESCRIPTION	BY	CHD	DATE
REVISIONS				

THIS DOCUMENT IS THE PROPERTY OF GHT - AUSTRALIA P/L. NO EXPLOITATION OR TRANSFER OF ANY INFORMATION CONTAINED HEREIN IS PERMITTED WITHOUT THE WRITTEN CONSENT OF GHT - AUSTRALIA P/L.



GLOBAL HEAT TRANSFER AUSTRALIA P/L

DRAWN: W.Y.W.  
DATE: 3-8-2016

CHECKED:

MATERIAL: ALUMINIUM

TITLE:

TEREX RH200, RH340 & RH340B EXCAVATOR HYDRAULIC OIL COOLER ARRANGEMENT (CAT6050 & CAT6060)

SCALE	SIZE	DWG No	REV
1:12	A3	A0/36/RH340	1